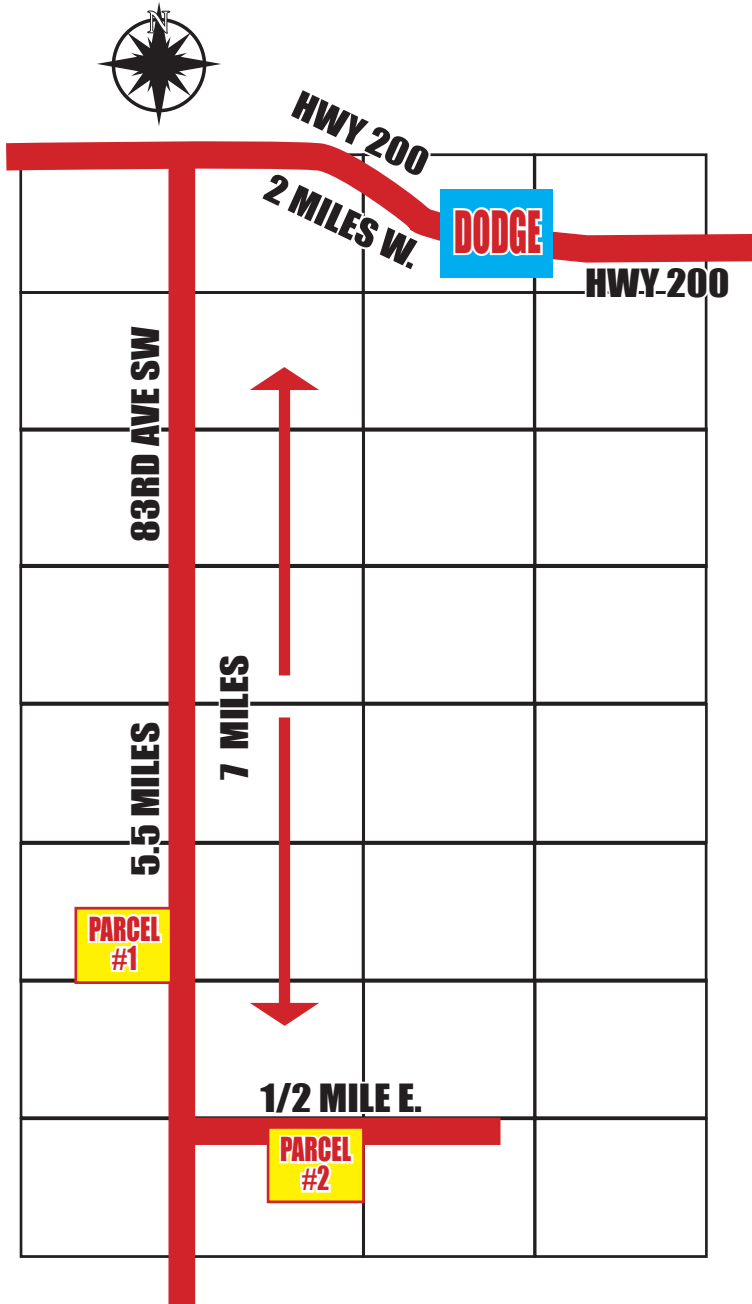


DUNN COUNTY LAND AUCTION

Dodge City Auditorium - Dodge, ND
 Wednesday May 17th, 2017 @ 6:00 PM MT
 Sellers: Jacob Duttenhefner Family



Parcel #1

SE4-Sec.6-143-91
 (156.03 +/- Acres)
 Tillable: 110.46 acres
 Pasture: 45.57 acres
 Pastureland is watered by a developed well on the farmstead

Directions: From Dodge, ND; 2 mi W on HWY 200, 5 1/2 mi S on 83rd Ave SW

Parcel #2

NE4-Sec.17-143-91
 (157.46 +/- Acres)
 Tillable: 100.73 acres
 Pastureland and Other: 56.73 acres
 Pastureland is watered by a large stock dam

Directions: From Dodge, ND; 2 mi W on HWY 200, 7 mi S on 83rd Ave SW and 1/2 mi E

Terms: 10% down with the balance due on closing. Sellers reserve all mineral acres. Land sells subject to any existing easements. Closing costs paid by the buyer. 2017 taxes paid by the buyer. Comments made on sale day take precedence over all other printed ads



Wolff Auctioneers



SHANE WOLFF
 LIC. NO. 326
 701-983-4573
 701-870-9090 (CELL)

HEAD CLERK:
 PAULA JO WANNER
 LIC. NO. 664
 701-870-1406 (CELL)

ARMON WOLFF
 LIC. NO. 306

Visit our web site: www.wolffauctioneers.com