

Mercer County Land Auction

80 Acres of Agricultural Real Estate

Friday Oct. 26th 2018 @ 5:30 PM CT

Located: From Pick City, on Hwy 200, 2 mi W, 4.5 mi S, then 1/4 mi W on Cty Rd 28

Auction Conducted @ the Pick City Community Hall, Pick City, ND 58554

Legal Description:

W2 of the NE4,

Sec. 28-146-85

Total Acres: 80

Tillable Land: 70.82

Acres

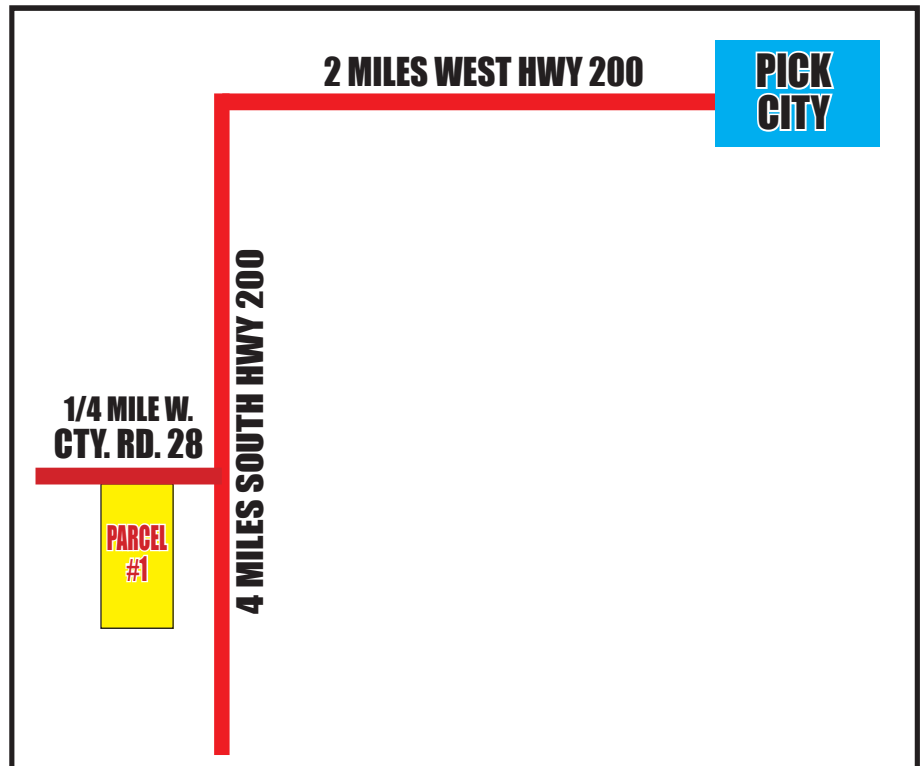
Grass Runways & Other

Land Acres: 9.18 Acres

The weighted average

based on crop

productivity index is 80



Terms of Sale: 10% down w/ balance on closing

Land sells subject to any and all existing easements

Sellers will bring abstracts up-to-date and pay 2018 taxes

Mineral acres are all reserved by sellers

Gravel and Scoria rights go to the new buyer

Buyer to pay closing costs

Comments made on sale day take precedence over all other advertising

This land sells with a First Right of Refusal. Seller: Linda Ziemann

For additional information on this auction and upcoming auctions go to www.wolffauctioneers.com



Wolf Auctioneers



SHANE WOLFF
LIC. NO. 326
701-983-4573
701-870-9090 (CELL)

HEAD CLERK:
PAULA JO WANNER
LIC. NO. 664
701-870-1406 (CELL)

Visit our web site: www.wolffauctioneers.com